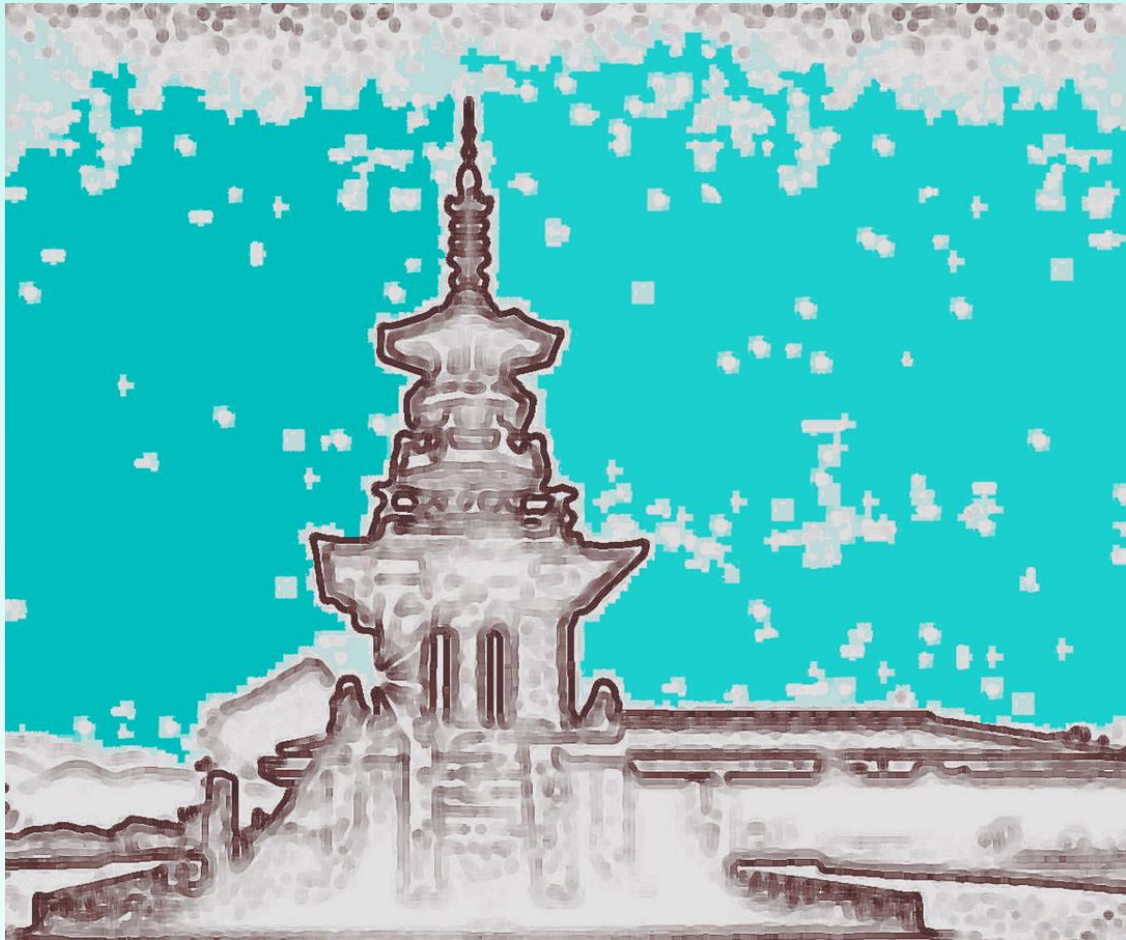


Proceeding of International Conference on

uHealthcare 2012

<http://abrc.snu.ac.kr>



October 25-27, 2012
Hyundai Hotel, Gyeongju
KOREA

SNUH
SEOUL NATIONAL UNIVERSITY
HOSPITAL

BSRC SNU | ABRC SNU | IMBE SNUMRC |
PTERC CNU | CNUMRI | CUCN KNU |



SICE

EMB
IEEE

Keynote and Invited Speakers

Kenote Lecture



K1 Yongmin Kim
(Pohang University, Korea)

Distributed Diagnosis and Home Healthcare (D2H2): Progress in the Last 15 Years and Future Challenges

Invited Lectures



IL1 Wenxi Chen
(Univ. of Aizu, Japan)
**Lifelong Healthcare:
Seamless Monitoring
from Womb to Tomb**



IL2 Youngho Kim
(LG Electronics, Korea)
**A National Project
"SmartCare Service"**



IL3 Bo Hong
(Tsinghua Univ., China)
**Visual Motion Brain
Computer Interface:
from scalp to cortex**



IL4 Chang-Hwan Im
(Hanyang Univ., Korea)
**Classification of Selective
Attention to Visual, Auditory,
or Tactile Stimuli and Its
Application to BCI**



IL5 Toshiyo Tamura
(Osaka Electro-Comm.
Univ. Japan)
**Obligatory physical
checkups for reducing
metabolic syndrome
using ICT**



IL6 Pradeep Kumar Ray
(Univ. of New South
Wales, Australia)
**Realizing ubiquitous
Healthcare in this
world: Motivations and
Challenges**



IL7 Hyung-Do Lim
(SK Research Inst.,
Korea)
**Legal and Regulatory
Issues in Smart
Healthcare**



IL8 Danilo De Rossi
(Univ. of Pisa, Italy)
**A Wearable Platform for
Remotely Assessing and
Monitoring Inner Mental
States and Affective
Disorders**

Invited Lectures



IL9 V. R. Singh (National Physical Laboratory, India)
New Smart Sensors for Effective U-Healthcare



IL10 Dae-Hyeong Kim (Seoul National Univ., Korea)
Flexible and Stretchable Electronics and Applications for Biomedical Devices



IL11 Sang Hoon Lee (Korea Univ., Korea)
Flexible micro- and macro-electrodes for long-term monitoring of biosignals



IL12 Nipon Theera-Umpon (Chiang Mai Univ. ,hailand)
Boundary Detection Using Edge Following Algorithm Based on Intensity and Texture Gradient Features



IL13 Esther Rodriguez-Villegas, (Imperial College, London, UK)
Wearable Technologies for Epilepsy Diagnosis and Monitoring



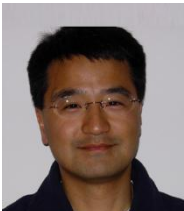
IL14 Sungmi Park (Kolon Glotech, Korea)
Ubiquitous Healthcare: Role of IT-enabled Textiles



IL15, Kazuo Sasaki (Univ. of Toyama, Japan)
Toward the Continuous Blood Pressure Monitoring at the Wrist



IL16 Yuan Ting Zhang (Chinese Univ. of Hong Kong, Hong Kong)
MISSION2020: Image Identification and Wearable Monitoring of Vulnerable Patients with Acute Cardiovascular Diseases



IL17 Ki H. Chon (Worcester Polytech. Inst., USA)
A Novel Method for Detection of Atrial Fibrillation using an iPhone

Program Overview

	October 25(Thr)	October 26(Fri)	October 27(Sat)
08:00	Registration	Registration	Registration
09:00		Oral Session 5 Sensing & Assessment Invited Lecture 8 & 9	Oral Session 9 uHealthcare for Cardiovascular Diseases Invited Lecture 15 & 16
10:00	Opening & Keynote Lecture	Break	Break
11:00	Break		Oral Session 10 Smart Phone for uHealthcare Invited Lecture 17
12:00	Oral Session 1 uHealthcare Projects Invited Lecture 1 & 2	Oral Session 6 Sensors & Devices for uHealthcare Invited Lecture 10 & 11	Closing
	Lunch	Lunch	Lunch
13:30	Oral Session 2 Brain Computer Interface Invited Lecture 3,4	Oral Session 7 Image Application for uHealthcare Invited Lecture 12	Gyeongju City Tour
14:00			
15:00	Break	Poster Session	
16:00	Oral Session 3 Monitoring and Assisting Systems Invited Lecture 5		
17:00	Oral Session 4 Realizing uHealthcare Invited Lecture 6 & 7	Oral Session 8 Wearable Technologies and Analysis Invited Lecture 13 & 14	
18:00		Conference Dinner	

Homepage: <http://abrc.snu.ac.kr/uh2012/>

Registration Fee

Regular: 150\$/170,000W, Student: 80\$/100,000W

Contacting

Duckki Park: Tel: +82-2-740-8586, Email: janeury@bmsil.snu.ac.kr

Kwang Suk Park: Tel: +82-2-2-72-3135, E-mail: kspark@bmsil.snu.ac.kr